

22D  MAX

# YOUR RESPECTABILITY MANAGER

Innovative technology - rejuvenate youth



— PRODUCT USER MANUAL



THE NEW 22D-MAX MAKES ITS DEBUT

# CONTENTS

## 22D-MAX

### MATTERS NEEDING ATTENTION

- Operational taboo
- Safety precautions
- Precautions before operation
- Precautions after operation
- Operation precautions

01 - 05

**01**

### INSTRUMENT INSTALLATION

- Component
- Handle connection host

06 - 07

**02**

### INTERFACE DESCRIPTION

- 13D Operation interface
- 18D Operation interface

08 - 09

**03**

### INSTRUCTIONS FOR USE

- 13D Multi-dimensional handle
- 18D RS Thermoplastic handle

10 - 11

**04**

### TECHNICAL PARAMETER

- Brushless motor parameters
- 13D probe configuration
- 18D probe configuration

12 - 14

**05**

### TECHNICAL PARAMETER

- Product configuration

15 - 15

**06**

### AFTER-SALES INSTRUCTIONS

- Maintenance
- Warranty clause

16 - 16

**07**

# Operational taboo

1. Prohibited during pregnant women and lactation.
2. People with irregular heart and heartbeat, especially those with cardiac pacemakers, should not do this.
3. Cancer patients, major surgery patients, diabetes patients prohibited.
4. People with epilepsy and severe hypertension are prohibited.
5. People with allergies and severe facial acne do not do it temporarily, and facial surgery is prohibited.
6. If the skin has a wound, avoid the wound or do not do.
7. If there is any metal in the body, do it carefully and avoid metal parts when operating.
8. Anyone with gold implants in the face, do not do it.
9. No plastic surgery, no artificial fillers in the body.
10. Patients with severe cystic acne on the face and neck should be cautious.
11. If the skin has serious infectious diseases, do it carefully.
12. Within 9 months, people who take isotretinoin (Accutane/Roaccutane /Oratane) should not do it.





## Safety precautions

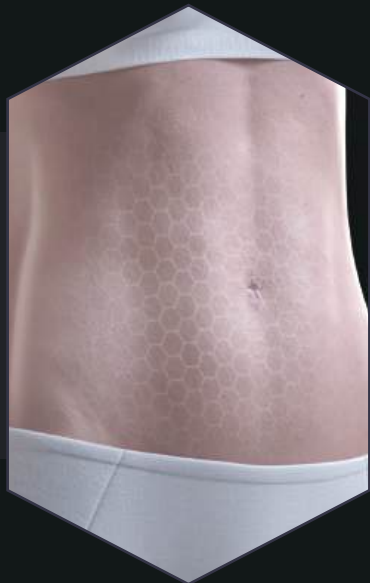
1. When the power plug is dirty, please clean it in time and make sure that there is no foreign matter before connecting the socket.
2. Be sure to connect to a 110-220V, 50Hz-60Hz power outlet, and unplug the power cord when moving the device.
3. Do not touch the power plug and do not pull the power cord.
4. Do not touch the power cable or power plug with wet hands.
5. Do not force the area around the instrument or power supply.
6. Do not use the instrument at high temperatures, and do not place heating equipment near the instrument.
7. Do not disassemble the power socket after the instrument is started, which will cause failure.
8. When the instrument is in use, if there is smoke or odor, please unplug the power supply and consult after-sales service.
9. Do not touch your lips or eyes when the handle is activated to avoid injury.
10. If the indicator is always bright blue during operation or an abnormal sound is heard, remove the handle from the skin surface in time.

# Precautions before operation

1. Consult experts or receive professional training before use.
2. Consult the customer's skin condition, allergies (severe allergies can not be operated).
3. Ask the customer if the instrument or face has been injected recently ( water light instrument can be operated after two days, HIFU type instrument can be operated after one month, face injection can be operated after three months).
4. Tell the customer in detail the feeling or reaction during the operation, so that the customer is psychologically prepared.
5. Do not take medication or drink alcohol for 24 hours before and after operation.
6. Before operation, the parameters of the beauty head should be adjusted well.
7. Check whether the instrument is in normal condition, and ensure that the instrument is normal and the preparation is complete before operation.



# Precautions after operation



1. After operation, do not use hot water to wash your face for a week, cold water is recommended, warm water can be used in winter (no more than 35 degrees).
2. Apply moisturizing repair mask once every morning and night for a month, pay attention to moisturizing, hydrating and sun protection.
3. Do not do thermal energy, color light and laser beauty equipment care for a week.
4. Do not use sauna, do not do facial massage, do not wear heavy makeup, do not be in high temperature environment, do not expose to the sun for two weeks.
5. It is not recommended to accept injection, wire burying, filling and other behaviors within one month.
6. Do not eat soy sauce and other heavily pigmented food, do not drink, smoke, eat hot pepper, seafood, blood and other food, do not eat hard food such as sugar cane, betel nut; Do not take antibiotics such as aspirin.
7. Try to drink less water after 8 p.m., because everyone's physique and metabolism are different, such as edema is a normal phenomenon, do not worry, symptoms will naturally fade.
8. Pay attention to rest after operation, ensure enough sleep, avoid strenuous exercise, and accelerate blood circulation after exercise is not easy to recover.
9. In order to achieve a better state after operation, it is necessary to do a good job of repair after operation, nutrition and water supplement; Avoid the situation that the effect is not ideal and the duration is not long due to the neglect of care and repair after operation.
10. People with poor metabolism, or people who have previously received filling, injection, and freckling behavior, may appear redness, rash and blackness in a short period of time, these are normal phenomena, 3-7 days will spontaneously subside, some people will last for about a week.
11. The part of the operation will have a feeling of acid swelling in a very small position within a month, which is a normal phenomenon.
12. Please consciously abide by the above regulations, has a decisive role in the presentation of the later effect, the more standardized the later care, the better the effect (keep longer, the skin condition will be better).

# Operation precautions

1. Read the instruction manual carefully, and then use according to the method in the instruction manual. If you do not use the instrument for a long time, please unplug the power supply.
2. When using the handle, first lower the strength, and then gradually adjust to the appropriate strength.
3. Discomfort during operation is a normal reaction, and the handle should be close to the skin during operation to avoid strengthening the discomfort.
4. When the handle is working (the work indicator is on), the handle should not leave the skin surface, and can only leave after the pause or end.
5. If the handle is abnormal, remove the handle from your skin in time to avoid unnecessary damage.
6. When the beautician operates, do not wrap the handle cable around the hand.
7. When changing the head, the socket on the head is installed against the handle port (in the suspended state).
8. When operating, the corresponding accessories must be obeyed to avoid uncomfortable feelings.
9. During operation, there must be sufficient medium (such as gel) for the parts to be cared for.
10. When the handle is not needed, it should be placed on the accessory rack. Do not pull the connection cable hard when the handle is in the accessory rack.
11. After using the instrument, wipe it clean with cotton cloth and cotton swabs, and then wipe the metal part of the cosmetic head/handle with 75% alcohol.
12. If you experience any abnormalities while using the instrument, stop the operation immediately and consult an expert.
13. If the instrument is abnormal, please confirm the instructions again before operation; If the exception is not lifted, do not disassemble the instrument yourself, you should contact after-sales service consultation.





# Component

The instrument is composed of a main machine and a handle (13D 18D), and the touch screen is in front of the main machine.



## 13.3 "HD smart screen

Classic large screen design  
Bezels are reduced by 40%



## 13D Multi-dimensional handle

Facial lift and skin firming.  
Multi-dimensional ultrasonic head  
innovative technology output

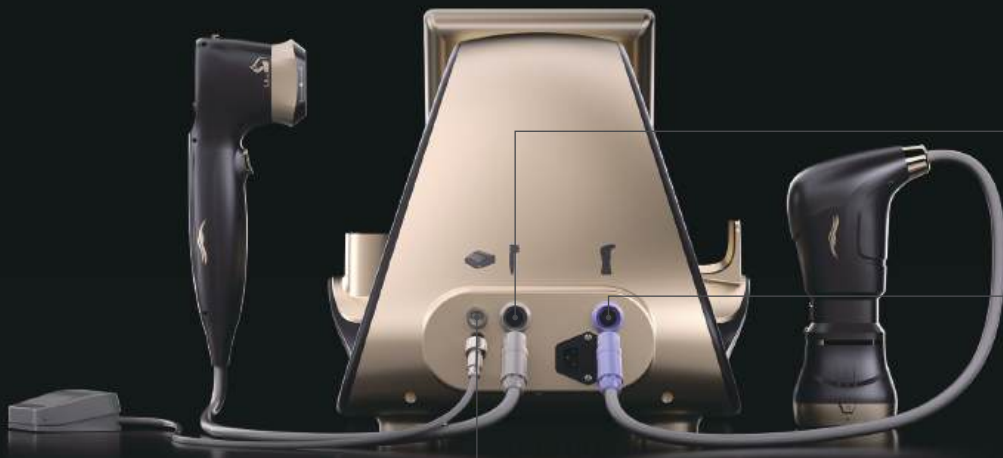


## 18D RS Thermoplastic handle

Remodeling body shape management  
New AI spiral RF wave technology output

## Handle connection host

See the rear cover jack and direction according to the rear cover diagram before installing the rear cover.



### 13D Connection jack

The grey plug corresponds to the grey interface on the instrument.



### 18D Connection jack

The purple plug corresponds to the purple port on the instrument.



### Foot pedal connection socket

The gold plug corresponds to the gold connector on the instrument.

# 13D Operation interface

Corresponding parts: Face (1.5mm, 3.0mm, 4.5mm) Chin (6.0mm)  
Thigh (10.0mm) Abdomen (8.0mm, 13.0mm) Buttocks (16.0mm, 18.0mm)



- ① Handle code
- ② Remaining number
- ③ Number of currently in use
- ④ Motherboard type
- ⑤ MP mode
- ⑥ Dot the animation area (displayed after startup)
- ⑦ Dot pattern
- ⑧ Probe frequency
- ⑨ Energy size regulation
- ⑩ Probe type (punch depth)
- ⑪ This time has operated the number of points
- ⑫ The total number of points in this operation is adjusted
- ⑬ Maximum number of points for this operation
- ⑭ Dot the number of lines adjustment
- ⑮ Dot the spacing adjustment
- ⑯ Dot length adjustment
- ⑰ Dot interval adjustment
- ⑱ Switch between startup and standby
- ⑲ Back
- ⑳ Setting

Adjust the energy intensity of the hand when working, according to the customer's bearing capacity.

MP: Line - multi-point line mode.

POINT : Dot - dot pattern.

WDTH : Number of rows - The number of rows to adjust the power of the hand during operation ( range 2-13 rows ).

PITCH : Line spacing - Adjust the distance between each line of energy at work ( range 2.1-1.0 ).

When adjusting the number of lines, the line spacing also changes correspondingly, adjusting the number of lines - line spacing ( 13-1.0 、 12-1.1 、 11-1.2 、 10-1.3 、 9-1.4 、 8-1.5 、 7-1.6 、 6-1.7 、 5-1.8 、 4-1.9 、 3-2.0 、 2-2.1 ).

LENGTH : Length - The length of the energy used to regulate the operation of the hand ( range 5-25 ).

INTERVAL : Interval - Adjust the interval between each round when the hand is working. The lower the interval, the faster the speed. The default value is 1.5 ( range 1.0-5.0 ).

Set the number of sends: adjust the number required for this work by "+" and "-". When the set number is used up, the handle automatically stops working and needs to be reset.

# 18D Operation interface

Corresponding parts: Abdomen (6.0mm, 8.0mm, 13.0mm)  
Thigh (10.0mm) Hips (16.0mm, 18.0mm)



- ① Handle code
- ② Remaining number
- ③ Number of currently in use
- ④ Motherboard type
- ⑤ MP mode
- ⑥ Dot the animation area (displayed after startup)
- ⑦ Dot pattern
- ⑧ Probe frequency
- ⑨ Energy size regulation
- ⑩ Probe type (punch depth)
- ⑪ Switch between startup and standby
- ⑫ Radio frequency (RF) energy regulation area
- ⑬ Multi-row mode selection
- ⑭ Circle mode selection
- ⑮ Back
- ⑯ Setting

Adjust the energy intensity of the hand when working, according to the customer's bearing capacity.

MP: Line - multi-point line mode.

POINT : Dot - dot pattern.

RF ENERGY : RF energy intensity - "+" "-" Adjust the energy of the hand when working.

STANDBY : Start - The hand starts working.

MODE SELECTION : Multi-row mode - Point-to-line mode.

SHAPE SELECTION : Circle mode - Point coil state.

BACK : Exit the operation screen and return to the Select hand screen.

SETTING : Background setting parameters.



## 13D Multi-dimensional handle


1. There is a display screen behind the hand to synchronously display the hand parameters, and the button below the display screen can synchronously adjust the energy parameters:





Adjust the energy intensity of the hand when working



Switch function mode


2. Hold down above the probe while replacing it  The replacement button is removed and replaced.


3. When the probe is stored, the side that contacts the skin should face up to avoid liquid damage to the operating surface. (  Standard configuration  assorting )





## 18D RS Thermoplastic handle

1. There are operation keys and probe replacement keys in front of the hand:

 Operation button

 Change probe button

2. When the probe is stored, the side that contacts the skin should face up to avoid liquid damage to the operating surface.

(  Standard configuration     assorting )

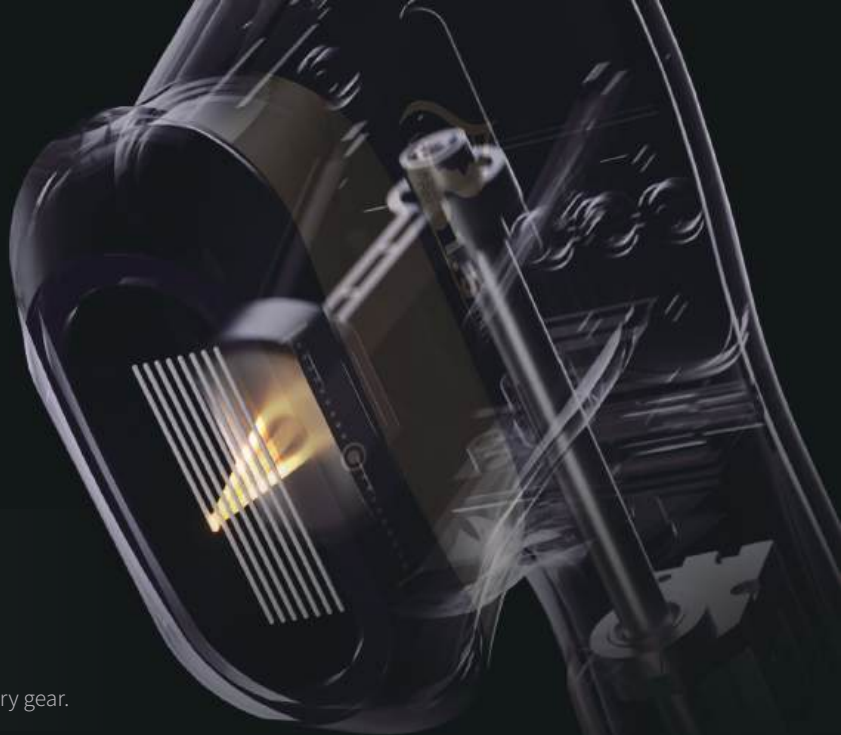


## Brushless motor parameters

High accuracy: built-in multiple position sensors to ensure the exact position.

Comprehensively improve the speed of handle operation and improve operation efficiency.

- ▲ Speed: more than 1600 revolutions per minute.
- ▲ High torque: 30mNm torque perfectly matches all skin types.
- ▲ Low noise: As quiet as baby sleep.
- ▲ High frequency: up to 20,000Hz.
- ▲ Long life: Efficient brushless motor with high-strength planetary gear.



Model name	profundity	Row number	Line spacing	Length	density	Suggested energy	Suggested number	Applicable position
1.5	1.5MM	2 - 13	1	25	1.5	0.3 - 1.0	200 - 300	Facial epidermis
3.0	3.0MM	2 - 13	1	25	3.0	0.5 - 1.0	200 - 300	Facial dermis
4.5	4.5MM	2 - 13	1	25	4.5	0.5 - 1.5	200 - 300	Facial fascia layer. Double chin
6.0	6.0MM	2 - 13	1	25	6.0	0.5 - 1.5	200 - 300	Facial fascia layer. Double chin
8.0	8.0MM	2 - 13	1	25	8.0	0.5 - 1.5	Unilateral 250 - 400	Butterfly sleeve
10.0	10MM	2 - 13	1	25	10.0	0.5 - 1.8	Unilateral 250 - 400	calf
13.0	13MM	2 - 13	1	25	13.0	0.6 - 2.0	500 - 800	belly
16.0	16MM	2 - 13	1	25	16.0	0.6 - 2.0	belly 500 - 800 Unilateral hip 400 - 500	Belly and hips
18.0	18MM	2 - 13	1	25	18.0	0.6 - 2.0	belly 500 - 800 Unilateral hip 400 - 500	Belly and hips
Remark	6.0/8.0/10.0/13.0/16.0/18.0All of them are optional, and the energy and number of hair should be adjusted according to the customer's situation. Use stamp method when operating, Point mode is suitable for delicate skin, MP mode is suitable for key strengthening.							

## 13D probe configuration





## 18D probe configuration



Model name	Energy	Radio frequency	Suggested energy	Suggested radio frequency	Suggested number	Applicable position	Operation mode
6.0	6.0MM	6.78MHz	0.5 - 1.5	5 - 15	200 - 300	Butterfly sleeve	Sliding mode Stamp pattern
8.0	8.0MM	6.78MHz	0.5 - 1.5	5 - 15	Unilateral 250 - 400	Butterfly sleeve	Sliding mode Stamp pattern
10.0	10MM	6.78MHz	0.5 - 1.8	5 - 18	Unilateral 350 - 500	Caif	Sliding mode Stamp pattern
13.0	13MM	6.78MHz	0.6 - 2.0	6 - 20	belly 500 - 800 Unilateral hip 400 - 500	Belly and hips	Sliding mode Stamp pattern
16.0	16MM	6.78MHz	0.6 - 2.0	6 - 20	belly 500 - 800 Unilateral hip 400 - 500	Belly and hips	Sliding mode Stamp pattern
18.0	18MM	6.78MHz	0.6 - 2.0	6 - 20	belly 500 - 800 Unilateral hip 400 - 500	Belly and hips	Sliding mode Stamp pattern
Remark	<p>6.0/10.0/16.0/18.0 are optional. The power and number of pulses must be adjusted according to the customer's situation. When using stamp technique, the energy must be reduced; When using the sliding technique, the energy can be appropriately raised.</p> <p>Point mode is suitable for delicate skin, MP mode is suitable for emphasis enhancement. MODE SELECTION for all skin, SHAPE SELECTION for local enhancement.</p>						

# Product configuration

The recipient shall inspect the goods according to the varieties and types on the parts list when receiving the goods! Overdue feedback responsibility!

Product Name : 22D - MAX

Model : 22D - MAX

Power Supply : AC 220V

Power : 1280W

Frequency : 2MHz 4MHz

Instrument weight : 10kg

Gross product quantity : 22kg

Package size : 32 X 53 X 37 cm



One host



13D 1 handle



18D 1 handle



13D 3 probes



18D 2 probes



One foot



1 power cord



Probe box



specification



Flight case

## Warranty clause

The design specifications of this product are subject to change without prior notice. If in doubt, please contact us

### 1. Main engine warranty for one year, accessories warranty for three months, lifelong maintenance!

- The main machine is guaranteed for one year, and the new machine can be replaced if there is non-human damage within one month.
- Parts warranty for three months, three months after the cost of parts repair fees.
- In case of man-made damage, the maintenance cost shall be borne by itself.

### 2. No free warranty service is provided for the failure caused by the following personal reasons.

- Failure caused by unauthorized disassembly and modification of this product.
- Failure caused by careless fall and fall.
- Failure caused by failure to follow the correct instructions in the instructions for use.
- Failure caused by lack of reasonable maintenance.

## Maintenance

- ▲ This equipment is mainly composed of precision optical instruments or electronic instruments, and its maintenance and repair shall comply with the general provisions of precision optical instruments and electronic instruments. In storage and use, it is necessary to prevent bumping, extrusion and vibration.
- ▲ Clean the accessories and the main machine with water, and then dry with a clean damp rag. Store in a cool and dry place. The accessory rack and other panels are made of acrylic. Do not wipe them with alcohol.
- ▲ Wipe and clean metal parts with 75% alcohol, and then put back in the accessories rack to prevent falling damage.

22D MAX INSTRUMENT SPECIFICATION